

# "DESPEOIDA"

## ACOUSTIC BASS

M.Zenon

(VOCALS)

(4X)

6

9 | 1, 2, 3.

12 | 4. (VOCALS)

**A** 16

20

24

28

**A1** 32

36

40

44

48 **A2** F7(b9) B<sup>b</sup>min7 F7(b9)

52 B<sup>b</sup>min7 E<sup>b</sup>7 A<sup>b</sup> E M7(#11) E<sup>b</sup>7

56 A<sup>b</sup> F7(b9) B<sup>b</sup>min7 F7(b9)

60 B<sup>b</sup>min7 E<sup>b</sup>7 C m7(b5) F7(b9)

64 B<sup>b</sup>min7 E<sup>b</sup>7

68 **B**

72

76

80

84 **B1**

88

92

96

100 (VOCALS)



150 **D**



154



158



162



**E** 165 **3X**



169



173



177



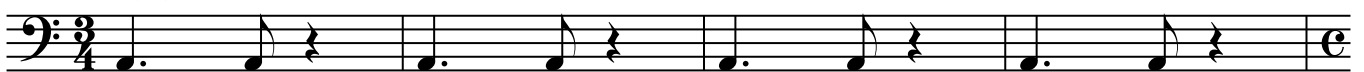
**E1** 179 **3X** **A M7(#11)** (OPEN SOLO)



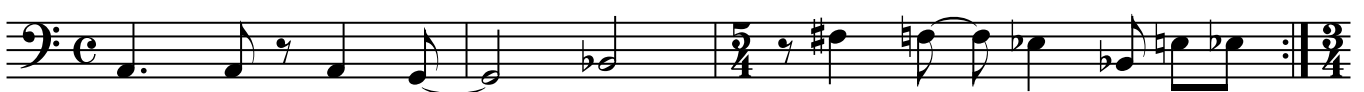
184 **Abm9**



189 **A M7(#11)**  
Open X's



193 **G M7(#11)** **Bbm7(#11)** **F#M7(b5)** **F9** **Eb7(b9)**



196 Last X  
A M7(#11)

200

204

F 209 (OPEN)

F1 213 (OPEN VOCALS)

(PLAY ON CUE)

217 (ON CUE)

G 221 (4X)

225

ENDING

232

236