

Acoustic Bass

# "Identities"

M.Zenon

(2X) (DRUMS) 3

5 (2X)

9 (MELODY IN) A

13

17

21

24 B

27

30

33

38 C

43

48

53

**D**

56

60

63

67

**E** (2X)

5

74

**F**

81

88

95

102

107

112

Musical staff for measure 112, bass clef, showing a sequence of notes: G2, A2, B2, C3, D3, E3, F3, G3, A3, B3, C4, D4, E4, F4, G4, A4, B4, C5.

117

Musical staff for measure 117, bass clef, showing a sequence of notes: G2, A2, B2, C3, D3, E3, F3, G3, A3, B3, C4, D4, E4, F4, G4, A4, B4, C5.

122

Musical staff for measure 122, bass clef, showing a sequence of notes: G2, A2, B2, C3, D3, E3, F3, G3, A3, B3, C4, D4, E4, F4, G4, A4, B4, C5.

127

Musical staff for measure 127, bass clef, showing a sequence of notes: G2, A2, B2, C3, D3, E3, F3, G3, A3, B3, C4, D4, E4, F4, G4, A4, B4, C5.

132

Musical staff for measure 132, bass clef, showing a sequence of notes: G2, A2, B2, C3, D3, E3, F3, G3, A3, B3, C4, D4, E4, F4, G4, A4, B4, C5.

137

Musical staff for measure 137, bass clef, showing a sequence of notes: G2, A2, B2, C3, D3, E3, F3, G3, A3, B3, C4, D4, E4, F4, G4, A4, B4, C5.

142 **G** *(OPEN SAX SOLO)* **E<sup>b</sup>(add9)** **E<sup>b</sup>+** **E<sup>b</sup>Maj6** **E<sup>b</sup>7** **A<sup>b</sup>Maj7** **A<sup>b</sup>(add9)** **A<sup>b</sup>min<sup>6</sup>**

Musical staff for measure 142, bass clef, showing a sequence of notes: G2, A2, B2, C3, D3, E3, F3, G3, A3, B3, C4, D4, E4, F4, G4, A4, B4, C5.

14 **E<sup>b</sup>(add9)** **E<sup>b</sup>+** **E<sup>b</sup>Maj6** **E<sup>b</sup>7** **A<sup>b</sup>Maj7** **A<sup>b</sup>(add9)** **A<sup>b</sup>min<sup>6</sup>**

Musical staff for measure 14, bass clef, showing a sequence of notes: G2, A2, B2, C3, D3, E3, F3, G3, A3, B3, C4, D4, E4, F4, G4, A4, B4, C5.

15 **E<sup>b</sup>(add9)** **E<sup>b</sup>+** **E<sup>b</sup>Maj6** **E<sup>b</sup>7** **A<sup>b</sup>Maj7** **A<sup>b</sup>(add9)** **A<sup>b</sup>min<sup>6</sup>**

Musical staff for measure 15, bass clef, showing a sequence of notes: G2, A2, B2, C3, D3, E3, F3, G3, A3, B3, C4, D4, E4, F4, G4, A4, B4, C5.

16 **E<sup>b</sup>(add9)** **E<sup>b</sup>+** **E<sup>b</sup>Maj6** **E<sup>b</sup>7** **A<sup>b</sup>Maj7** **A<sup>b</sup>(add9)** **A<sup>b</sup>min<sup>6</sup>**

Musical staff for measure 16, bass clef, showing a sequence of notes: G2, A2, B2, C3, D3, E3, F3, G3, A3, B3, C4, D4, E4, F4, G4, A4, B4, C5.

170 **F<sup>#</sup>(add9)** **F<sup>#</sup>m9** **F<sup>#</sup>M7(b5)** **G<sup>b</sup>M7(b5)** **A<sup>6</sup><sub>9</sub>**

Musical staff for measure 170, bass clef, showing a sequence of notes: G2, A2, B2, C3, D3, E3, F3, G3, A3, B3, C4, D4, E4, F4, G4, A4, B4, C5.

17 **F<sup>#</sup>(add9)** **F<sup>#</sup>m9** **F<sup>#</sup>M7(b5)** **G<sup>b</sup>M7(b5)** **A<sup>6</sup><sub>9</sub>**

Musical staff for measure 17, bass clef, showing a sequence of notes: G2, A2, B2, C3, D3, E3, F3, G3, A3, B3, C4, D4, E4, F4, G4, A4, B4, C5.

186  $F\#(add9)$   $F\#m9$   $F\#M7(b5)$   $G M7(b5)$   $A_9^6$

187  $F\#(add9)$   $F\#m9$   $F\#M7(b5)$   $G M7(b5)$   $A_9^6$

190  $E(add9)$   $G_9^6$   $D_9^6$   $C M9$   $D_9^6$

195  $E(add9)$   $G_9^6$   $D_9^6$   $C M9$   $D_9^6$

200  $E(add9)$   $G_9^6$   $D_9^6$   $C M9$   $D_9^6$

205  $E(add9)$  Open X's  $G_9^6$   $D_9^6$   $C M9$   $B^b7$

210  $E(add9)$  Last X  $G_9^6$   $D_9^6$   $B^bMaj7$   $D_9^{b13}$

215 INTERLUDE

221

227

233

239 **H**  $G_m9$  (OPEN PIANO SOLO)  $E_m9$   $D^bM13(\#11)$   $C min^6$   $A^bMaj7$

245  $G_m9$   $E_m9$   $D^bM13(\#11)$   $C min^6$   $A^bMaj7$

251  $E^bM9$   $E_m7(b5)$   $F(add9)$   $F\#o7$   $D_7$   $C_7$   $A_7$

257 Open X's  
A7sus(b9) (OPTIONAL BASS LINE)

Musical staff for measure 257, bass clef, 5/8 time signature. The staff contains a sequence of eighth and quarter notes.

263 Bb(add9)  
F# (OPTIONAL BASS LINE)

Musical staff for measure 263, bass clef, 5/8 time signature. The staff contains a sequence of eighth and quarter notes with a sharp sign.

269 Last X (PLAY!!!)

Musical staff for measure 269, bass clef, 5/8 time signature. The staff contains a sequence of eighth and quarter notes.

275

Musical staff for measure 275, bass clef, 5/8 time signature. The staff contains a sequence of eighth and quarter notes with a flat sign.

281

Musical staff for measure 281, bass clef, 5/8 time signature. The staff contains a sequence of eighth and quarter notes with a flat sign.

287

Musical staff for measure 287, bass clef, 5/8 time signature. The staff contains a sequence of eighth and quarter notes with a flat sign.

293 1 (DRUMS)

Musical staff for measure 293, bass clef, 5/4 time signature. The staff contains a sequence of quarter notes with a '3' above the staff.

MELODY IN  
3

305

Musical staff for measure 305, bass clef, 5/4 time signature. The staff contains a sequence of eighth and quarter notes with a flat sign.

309

Musical staff for measure 309, bass clef, 5/4 time signature. The staff contains a sequence of quarter notes with a '3' above the staff.

313

Musical staff for measure 313, bass clef, 5/4 time signature. The staff contains a sequence of eighth and quarter notes with a sharp sign.

317 K

Musical staff for measure 317, bass clef, 7/4 time signature. The staff contains a sequence of eighth and quarter notes with a flat sign.

320

Musical staff for measure 320, bass clef, 7/4 time signature. The staff contains a sequence of eighth and quarter notes with a flat sign and an accent mark (^).

323

Musical staff for measure 323, bass clef, 7/4 time signature. The staff contains a sequence of eighth and quarter notes with a sharp sign.

326

L



331



336



341



346

M



349



353



356



360



363



367



370

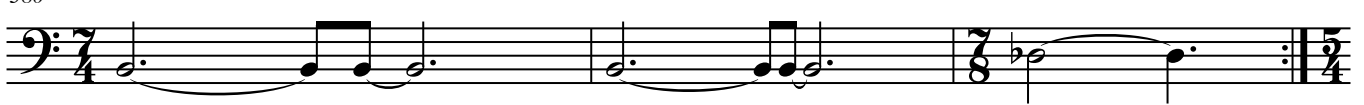


376

N (2X)



380



383

