

# Drums

# Superstition

Stevie Wonder  
Arr. M. Zenon

**(HORNS)**

5 **(STRAIGHT)**

**A** **(MOZAMBIQUE)**

8 **(CYMBAL)** **(BELL)** **(OPEN HAT)** **(B.D.)** **(SNARE)** **(RIM)**

12 **(CONTINUE)** (4)

16 (4)

20 (4)

24 **(CYMBAL)** **(BELL)** **(OPEN HAT)** **(B.D.)** **(SNARE)** **(RIM)**

28 **(CONTINUE)** (4)

32 (4)

36 (4)

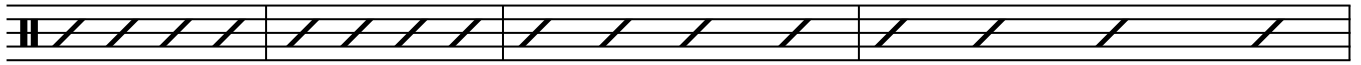
40 **(CYMBAL)** **(BELL)** **(OPEN HAT)** **(B.D.)** **(SNARE)** **(RIM)**

44 **(CONTINUE)** (4)

Detailed description: The image shows a musical score for drums. At the top, there is a bass clef staff labeled '(HORNS)' with a 3/4 time signature. It contains a melodic line with triplets and a '3' marking. Below this is another bass clef staff labeled '(STRAIGHT)' with a 2/4 time signature. The main drum part starts at measure 8, marked with a box 'A' and '(MOZAMBIQUE)'. It features a complex pattern of notes for Cymbal, Bell, Open Hat, Bass Drum (B.D.), Snare, and Rim. The pattern repeats every 4 measures, with '(4)' written below the staff. There are four such 4-measure blocks, starting at measures 8, 16, 24, and 32. The drum part ends at measure 44. The notation includes various drum symbols and rests.

48

(4)



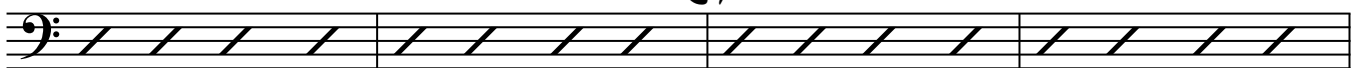
52



8



62



66



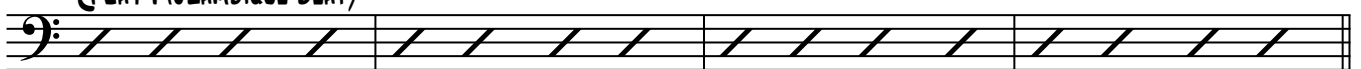
70



81



78



82



87



82



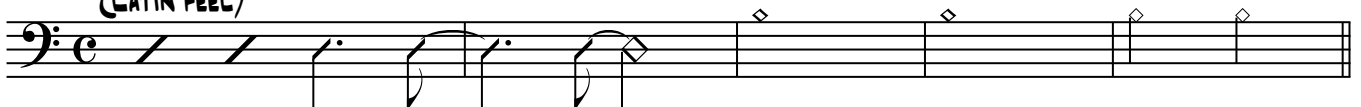
95



99



103



108 (PLAY MOZAMBIQUE BEAT)

112

116

120 (PLAY FILL)

126 (BACKBEAT FEEL)

130 (PLAY FILL)

136 (MOZAMBIQUE)

140

144 (DOUBLE TIME)

148 (ALTO) (PLAY FILL)

151 (PLAY OVER TIME)

155 (PLAY HITS)

159 (PLAY MOZAMBIQUE BEAT)

163

176 (HAT)

183

Detailed description of the musical score: The score is written for a drum set and is organized into sections. Section C (measures 108-130) features a 'MOZAMBIQUE BEAT' pattern of eighth notes, followed by a 'BACKBEAT FEEL' section with a snare drum on the backbeats. Section D (measures 136-148) includes a 'MOZAMBIQUE' section with a 3/4 time signature and a 'DOUBLE TIME' section. Section O1 (measures 151-159) features a 'PLAY OVER TIME' section with a 2/4 time signature and a 'PLAY HITS' section. Section O2 (measures 163-176) includes a 'PLAY MOZAMBIQUE BEAT' section with a 3/4 time signature and a 'HAT' section with a snare drum. Section E (measures 183) features a snare drum part with a 2/4 time signature. The score includes various time signatures (4/4, 3/4, 2/4) and dynamic markings like 'ALTO' and 'PLAY FILL'.

189 (GROOVE - LATIN FEEL)

189

189

193

193

199

199

(OPEN SOLOS)

F

202

C#m7(b5) C9 BbM7(b5) Am9 D(add9) E(add9)

202

208

Gmin9 F#m7(b5) FM7(b5)

208

212

C6 Cmaj7 C#m7(b5) C9 BbM7(b5)

212

218

Am9 D(add9) E(add9)

218

222

Gmin9 F#m7(b5) FM7(b5) C6 Cmaj7

222

228

C#m7(b5) C9 BbM7(b5)

228

232

Am9 D(add9) E(add9) Gmin9 F#m7(b5) FM7(b5)

232

238

C6 Cmaj7

238

(ON CUE)

G

241

C#m7(b5) C9 BbM7(b5) Am9 D(add9) E(add9)

241

247

Gmin9 F#m7(b5) FM7(b5)

247

251

C6 Cmaj7 C#m7(b5) C9 BbM7(b5)

251

257  $A_{m9}$   $D_{(add9)}$   $E_{(add9)}$

261  $G_{min9}$   $F\#m7(b5)$   $F_{M7(b5)}$   $C_9$   $C_{Maj7}$

267 (HARD GROOVE - W/ COWBELL)

271

274

277 (PLAY HITS)

*subito p* *ff*

H 280 (3X) (BEAT)

285  $C_{m(add9)}$  (LATIN FEEL)  $F_{13(\#11)}$   $B_{(add9)}$   $A_{9(\#11)}$

289 (3X)

294  $C_{m(add9)}$  (LATIN FEEL)  $F_{13(\#11)}$   $B_{(add9)}$   $A_{9(\#11)}$   $A^b_{Maj7}$   $B^b$

298  $A_{Maj7}$   $B$

302  $A^b_{Maj7}$   $B^b$

(OPEN SOLOS) C<sub>m(add9)</sub>

1

306

B (BEAT CONTINUES)

(5)

(5)

316

1. C<sub>m(add9)</sub> F<sub>13(#11)</sub> B<sub>(add9)</sub> A<sub>9(#11)</sub>  
 (LATIN FEEL) G

325

2. C<sub>m(add9)</sub> (LATIN FEEL) F<sub>13(#11)</sub> B<sub>(add9)</sub> A<sub>9(#11)</sub> A<sup>b</sup>Maj7  
 G B<sup>b</sup>

329

A<sup>b</sup>Maj7

333

A<sup>b</sup>Maj7  
B<sup>b</sup>

(ON CUE)

2

337

(BEAT CONTINUES)

341

345

(MOZAMBIQUE)

K

349

353

357

361

(PLAY OVER TIME)

365

(PLAY HITS)

(PIANO)

L

369

(REPEAT)

373

377

(HORNS)

381

M

385

4X

(DRUM SOLO - BUILD TO LETTER N)

389

4X

(SWING FEEL)

(PLAY THROUGH)

N

393

396

(PLAY HITS)

(PLAY TIME)

(STRAIGHT)

(PLAY THROUGH)